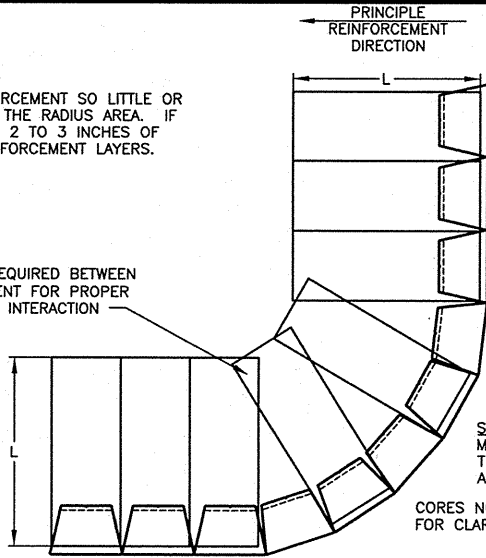


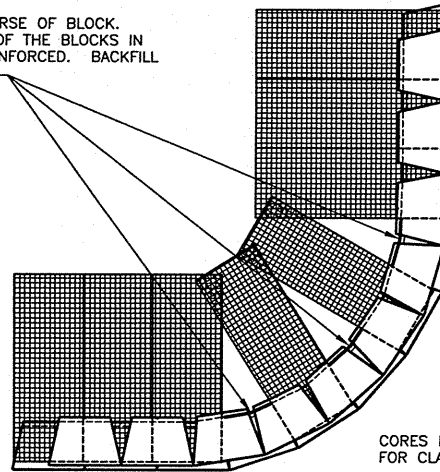
STEP 1 - PLACE REINFORCEMENT SO LITTLE OR NO OVERLAP OCCURS IN THE RADIUS AREA. IF OVERLAP OCCURS, PLACE 2 TO 3 INCHES OF SAND BETWEEN THE REINFORCEMENT LAYERS.

2" TO 3" OF SOIL FILL REQUIRED BETWEEN OVERLAPPED REINFORCEMENT FOR PROPER SOIL AND REINFORCEMENT INTERACTION

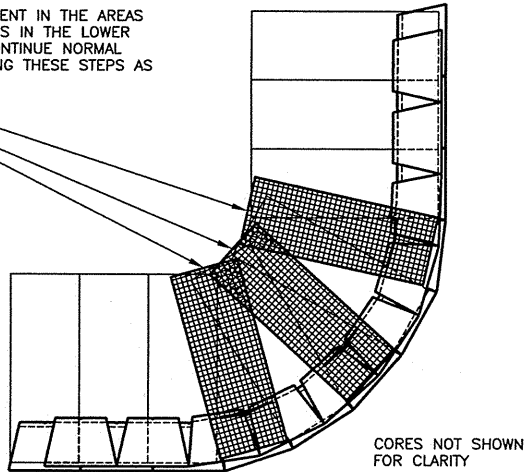


STEP 2 - LAY THE NEXT COURSE OF BLOCK. MAKE A MARK ON THE BACK OF THE BLOCKS IN THE AREAS THAT ARE NOT REINFORCED. BACKFILL AND COMPACT THAT COURSE.

CORES NOT SHOWN FOR CLARITY

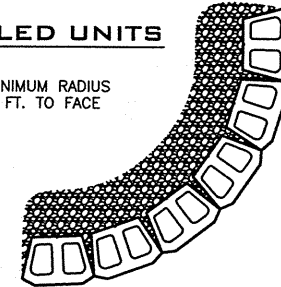


STEP 3 - PLACE REINFORCEMENT IN THE AREAS WHERE THE MARKS SHOW GAPS IN THE LOWER REINFORCEMENT PATTERN. CONTINUE NORMAL WALL CONSTRUCTION, REPEATING THESE STEPS AS NEEDED.



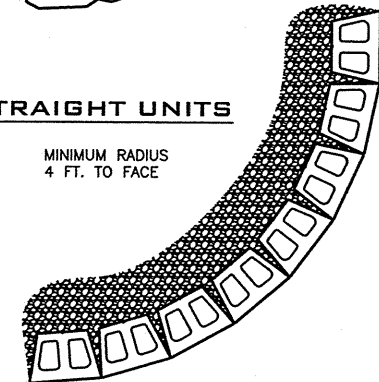
**BEVELED UNITS**

MINIMUM RADIUS  
4 FT. TO FACE



**STRAIGHT UNITS**

MINIMUM RADIUS  
4 FT. TO FACE



**ANCHOR DIAMOND PRO™  
X  
WX** (NOT TO SCALE)  
OUTSIDE CURVE W/ GRID

**ANCHOR DIAMOND PRO™  
X  
WX** (SCALE: 1/4" = 1'-0")  
OUTSIDE CURVE



These graphical representations are intended for preliminary design purposes only, and are not to be used for construction without the signature of a registered professional engineer.

All information herein © 2005 Anchor Wall Systems

Drawn By: AWS  
Date: 4/26/2005  
Scale: AS SHOWN

Drawing Title: ANCHOR DIAMOND PRO OUTSIDE CURVE DETAILS  
Project Information: ANCHOR RETAINING WALL SYSTEMS TYPICAL WALL DETAILS