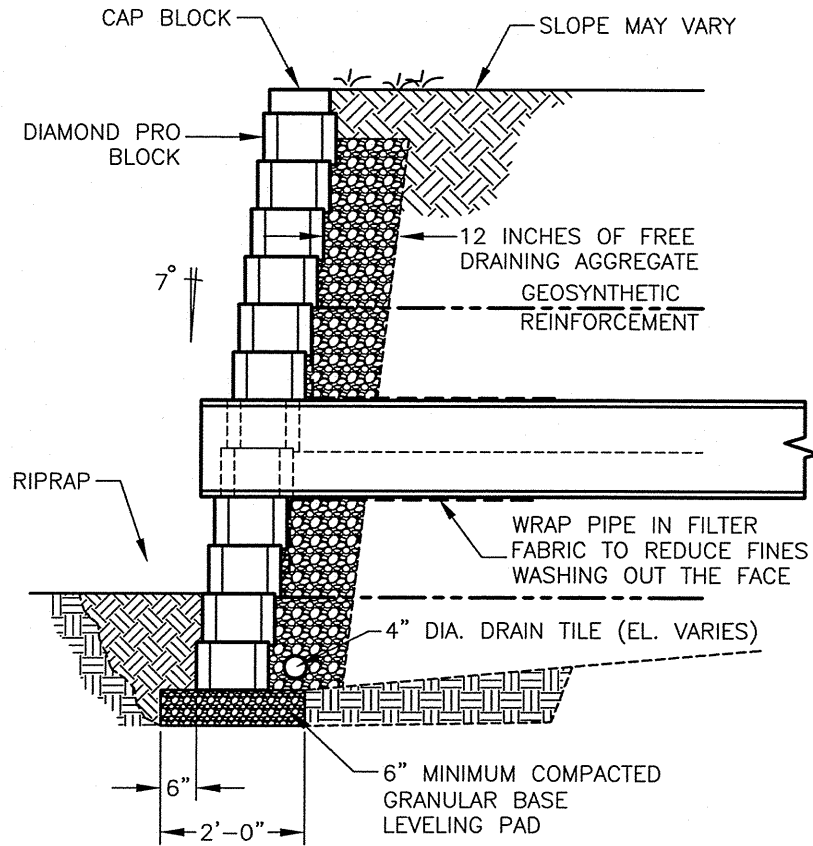


HAND CUT BLOCK UNITS
TO WITHIN 1/2" OF PIPE

SCOUR PROTECTION
AS REQUIRED. USE
RIPRAP OR PRECAST
SLAB IN OUTLET AREA
(DESIGNED BY OTHERS)

FACE VIEW



SECTION VIEW

ANCHOR DIAMOND PRO™
THROUGH WALL PIPE OUTLET - LOW FLOW
 (X) WX (NOT TO SCALE)



These graphical representations are intended for preliminary design purposes only, and are not to be used for construction without the signature of a registered professional engineer.

All information herein © 2005 Anchor Wall Systems

Drawn By: AWS
 Date: 4/26/2005
 Scale: NTS

Drawing Title: ANCHOR DIAMOND PRO LOW FLOW PIPE THRU WALL
 Project Information: ANCHOR RETAINING WALL SYSTEMS TYPICAL WALL DETAILS