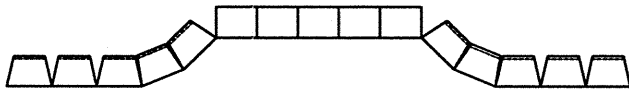
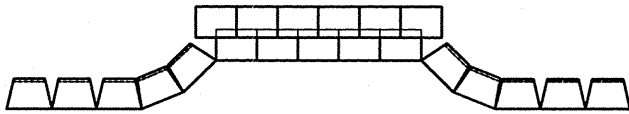


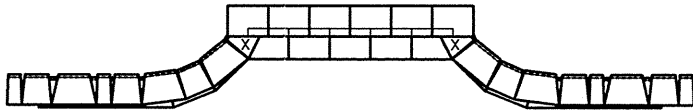
STEP 1 - ESTABLISH BASE COURSE, USING NORMAL CONSTRUCTION PROCEDURES, AS SHOWN ON WALL PLAN.



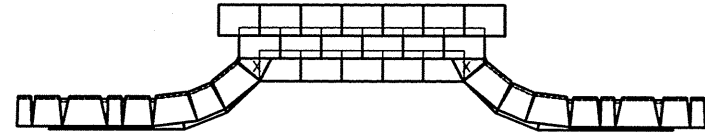
STEP 2 - ADD SECOND COURSE OF STEP UNITS, MAINTAINING RUNNING BOND. OVERLAP PREVIOUS COURSE OF STEP UNITS 2", AND ADHERE TO LOWER COURSE WITH AN EXTERIOR CONSTRUCTION ADHESIVE.



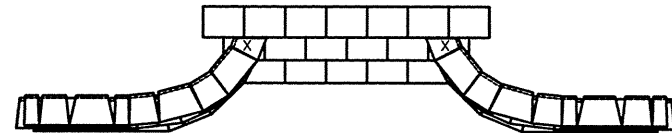
STEP 3 - CONTINUE TO PLACE THE NEXT COURSE OF HIGHLAND STONE UNITS ON THE WALL, MAINTAINING THE RUNNING BOND. CUT THE UNIT MARKED WITH 'X' TO FIT, REMOVE THE REAR LIP OF THIS UNIT, AND ADHERE WITH AN EXTERIOR CONSTRUCTION ADHESIVE.



STEP 4 - PLACE THE NEXT ROW OF STEP UNITS. OVERLAP THE PREVIOUS COURSE 2 INCHES, AND ADHERE WITH AN EXTERIOR CONSTRUCTION ADHESIVE. EXTEND THIS COURSE BEHIND THE WALL SYSTEM AS NEEDED.



STEP 5 - CONTINUE STEPS 3 AND 4 UNTIL THE DESIRED WALL HEIGHT IS COMPLETED. CUT THE BLOCK SHOWN AS 'X', REMOVE THE REAR LIPS AND ADHERE THE BLOCK WITH AN EXTERIOR CONSTRUCTION ADHESIVE FOR EACH COURSE CONSTRUCTED.




**ANCHOR HIGHLAND STONE™**  
**TYPICAL STEP CONSTRUCTION**  
 (NOT TO SCALE)



These graphical representations are intended for preliminary design purposes only, and are not to be used for construction without the signature of a registered professional engineer.

All information herein © 2005 Anchor Wall Systems

Drawn By: AWS  
 Date: 5/22/05  
 Scale: NTS

Drawing Title: **ANCHOR HIGHLAND STONE TYPICAL STEP CONSTRUCTION**  
 Project Information: ANCHOR RETAINING WALL SYSTEMS TYPICAL WALL DETAILS